



Known for Reliability Since 1921

The PRO-9 Series machines are merchandising centers and offer great versatility. Use the Standard Tenderizer Cradle assembly to tenderize and knit beef products. The Strip Cutting assembly is used for strip cutting beef and chicken stir-fry products, or for fajitas and julienne for salads, beef jerky strips, and beef cubing for kabobs and stews. The Star Roller assembly can punch 1/8" lasting holes in beef patties to make the beef more tender and reduce cooking time up to 40%.

Use multiple surface Scoring Rollers to enhance eye-appealing beef patties. Use the specially designed Cutlet Tenderizer Roller assembly to enhance the texture and tenderness of veal, chicken breasts, or squid by gently piercing the product without tearing. The PRO-9 Series machines help merchandise product by adding value to less expensive, less desirable, and less tender products, thereby enhancing your profit margin.

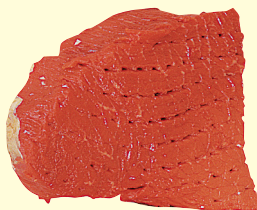


Model PRO-9SD 1/2HP
Model PRO-9HD 1/2HP
Model PRO-9HD 3/4HP

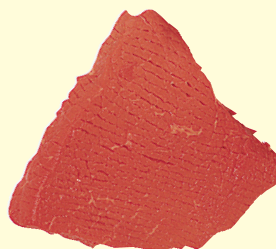
PRO-9 Series



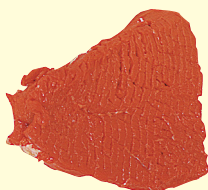
Standard Cube Steak
Tenderizing/Knitting



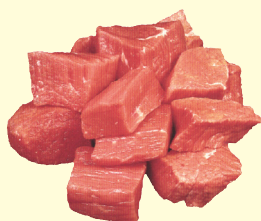
Beef Steak
Star Punching



Beef Cutlet
Tenderizing



Beef Steak
Scoring



Beef Kabobs



Beef Strips



Chicken Stir Fry

SPECIFICATIONS

| MODELS | Pro-9SD 1/2HP | Pro-9HD 1/2HP | Pro-9HD 3/4HP |
|--|---|---|-----------------|
| Electrical Supply | 5' (1524mm) 3 wire, power cord on 115V with 3 prong ground plug • on 220V cord supplied less plug | | |
| Construction | Stainless steel case, case top • lexan transparent safety feed cover • coated steel frame | | |
| Safety Switch | Motor shuts down when safety feed cover is raised | | |
| Transmission Drive | Poly flex double v-belt | | |
| Transmission Aluminum, Oil bath | Bronze sleeve bearings • fiber drive gear | Ball bearings • steel gears | |
| Roller Speeds | 105 R.P.M. Standard | 115 R.P.M. Standard 140 R.P.M. Optional- No Cost | |
| Certifications | N.S.F. • U.S.D.A. • U.L. • C.S.A.(115v-60hz) • C.F.I.A. | | |
| Standard Features | TA3130 Dual purpose tenderizing/knitting assembly • operating and safety manual | | |
| Options | Heavy duty rigid S.S. combs • stainless steel safety cover • cradle storage box • nylon feed handle | | |
| Weights: | Approximate - depending on options | | |
| Pro-9 unpacked | 69lbs. (31kg) | 70lbs. (32kg) | 73lbs. (33.1kg) |
| Pro-9 packed | 76lbs. (34kg) | 78lbs. (35kg) | 80lbs. (36kg) |
| Dimensions packed | L = 20" (508mm) x W = 19" (483mm) x H = 21" (533.4mm) | | |

| Motors: Standard and Optional | | | | | | | |
|-------------------------------|-----|-------|---------|----------|-------|----|--------|
| HP | KW | TYPE | VOLTS | AMPS | CYCLE | PH | STATUS |
| 1/2SD | .38 | GP/DP | 115/230 | 6.6/3.3 | 60 | 1 | STD |
| 1/2HD | .38 | GP/DP | 115/230 | 6.6/3.3 | 60 | 1 | STD |
| 3/4HD | .56 | GP/DP | 115/230 | 8.4/4.2 | 60 | 1 | STD |
| 1/2SD | .38 | GP/DP | 115/230 | 8.4/4.2 | 50 | 1 | EC |
| 1/2HD | .38 | GP/DP | 115/230 | 8.4/4.2 | 50 | 1 | EC |
| 3/4HD | .56 | GP/DP | 115/230 | 13.6/6.8 | 50 | 1 | EC |

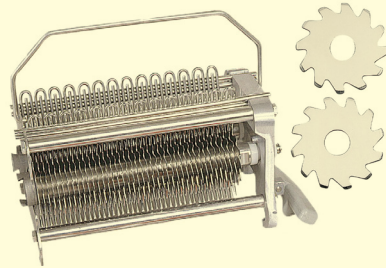
DP = Drip Proof EC = Extra Cost GP = General Purpose HD = Heavy Duty
HP = Horsepower SD = Standard Duty STD = Standard

| Standard and Optional Cutting Cradle Assemblies | | | | | | |
|---|---|---------------|------------------|------------------|------------------|---------|
| Item No. | DESCRIPTIONS Dimensions in inches/mm | Cover TYPE | Pro-9SD 1/2HP | Pro-9HD 1/2HP | Pro-9HD 3/4HP | Pro-9HD |
| TA3130 | Std. (tenderizing) cradle | L | STD | STD | STD | STD |
| TA3130-50 | Cutlet (tenderizing) cradle | SS | EC | EC | EC | EC |
| TA3130-9A | 1/4" / 6.3 Stew-strip cradle | L | NA | EC | EC | EC |
| TA3130-5A | 3/8" / 9.5 Stew-strip cradle | L | NA | EC | EC | EC |
| TA3130-4A | 9/16" / 14.3 Stew-strip cradle | L | EC | EC | EC | EC |
| TA3130-1A | 3/4" / 19.1 Stew-strip cradle | L | EC | EC | EC | EC |
| TA3130-14A | 7/8" / 22.2 Stew-strip cradle | L | EC | EC | EC | EC |
| TA3130-2A | 1" / 25.4 Stew-strip cradle | L | EC | EC | EC | EC |
| TA3130-3A | 1-1/4" / 31.7 Stew-strip cradle | L | EC | EC | EC | EC |
| TA3130-7A | 1-9/16" / 39.7 Stew-strip cradle | L | EC | EC | EC | EC |
| TA3130-8A | 2" / 50.8 Stew-strip cradle | L | EC | EC | EC | EC |
| TA3130-36 | Star blade roller cradle | L | EC | EC | EC | EC |
| TA3130-20 | Scoring cradle, 0" roller gap | L | EC | EC | EC | EC |
| TA3130-21 | Scoring cradle, 1/16" / 1.6 roller gap | L | EC | EC | EC | EC |
| TA3130-22 | Scoring cradle, 1/8" / 3.2 roller gap | L | EC | EC | EC | EC |
| TA3130-23 | Scoring cradle, 3/16" / 4.8 roller gap | L | EC | EC | EC | EC |
| TA3130-24 | Scoring cradle, 1/4" / 6.4 roller gap | L | EC | EC | EC | EC |

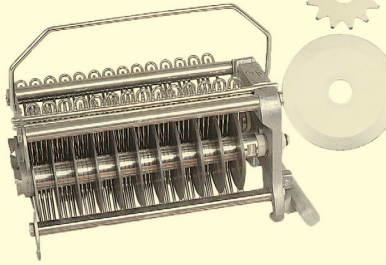
EC = Extra Cost L = Lexan NA = Not Available SS = Stainless Steel STD = Standard

| Scoring Cradle Blade Assemblies | | | | |
|---------------------------------|------------------------|--|---------------------|--------------------|
| Product Type | Patty Thickness | Recommend Blade Roller Assembly combination for 1/16" Depth of scoring on each side of patty (dimensions in inches/mm) | | |
| | | Front Blade Diameter | Back Blade Diameter | "A" Gap Dimensions |
| Soft | 1/8" - 1/4" / 3.2-6.4 | 2" / 50.8 | 2" / 50.8 | 0 |
| | 1/4" - 1/2" / 6.4-12.7 | 2" / 50.8 | 1-7/8" / 47.6 | 1/16" / 1.6 |
| Frozen | 1/4" / 6.4 | 1-7/8" / 47.6 | 1-7/8" / 47.6 | 1/8" / 3.2 |
| | 5/16" / 7.9 | 1-7/8" / 47.6 | 1-3/4" / 44.5 | 3/16" / 4.3 |
| | 3/8" / 9.5 | 1-3/4" / 44.5 | 1-3/4" / 44.5 | 1/4" / 6.3 |

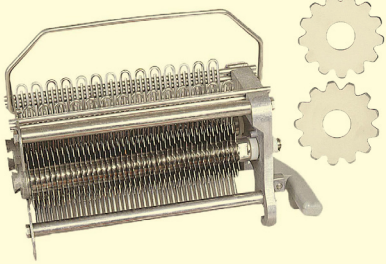
NOTE: If deeper scoring is desired, use the next larger dia. blade roller combination than recommended.



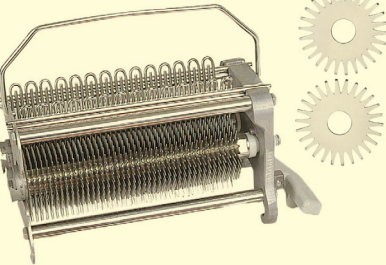
The Standard Tenderizer Blade Tips cut deep (1020 times per revolution) into the product to sever sinew and fiber. Turn your tenderizer into a Knitting machine by changing the position of the rear stripper and feed 2-3 smaller pieces of hard-to-merchandise pieces to form one value-added knitted steak.



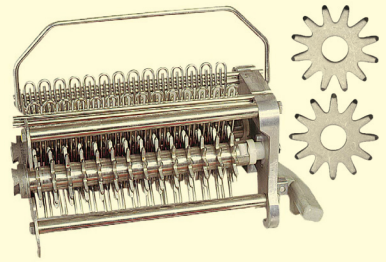
The multi-functional Stew-Strip Cutting Cradle assembly can cut jerky strips, and chicken stir fry for salads. Two passes makes cubes for stew and soups adding value to your products. See chart for selection of nine (9) strip cutting widths.



Select from five (5) Scoring Roller Blade cradle assemblies from the Guide chart below to score steaks or patties to create eye appealing, faster cooking products.

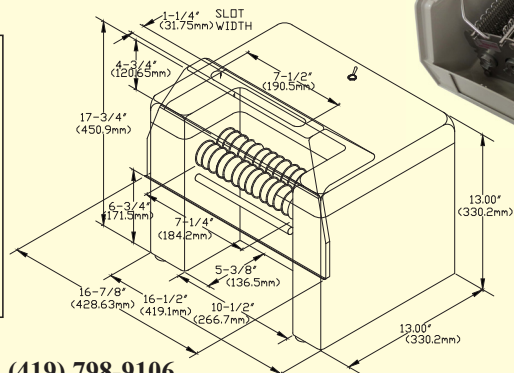
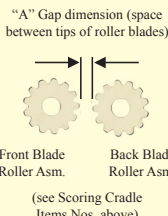
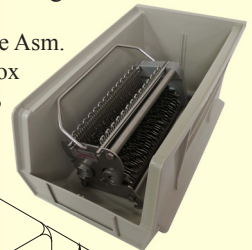


Cutlet Tenderizer Blade Cradle assembly designed for delicate products (chicken breast, veal, squid) by piercing 2125 product pierces per revolution, adding to your value-added product mix (veal scallopini and veal parmesan).



Star Blade Cradle assembly punches 1/8" holes into meat patties or less desirable steaks to break down fiber, reducing cooking time up to 40%, adding value that contributes to your margin.

Optional Cradle Asm. Storage Box T3130-S



BIRO MANUFACTURING COMPANY
1114 WEST MAIN STREET

Phone: (419) 798-4451 Fax: (419) 798-9106

MARBLEHEAD, OH 43440-2099 U.S.A. <http://www.birosaw.com> sales@birosaw.com

ITEM NO.: LIT-PRO9-131

All specifications contained herein are subject to change without notification.

FORM NO.: MD-PRO-SRS-131-9-20-38

Service is available from locations worldwide