



DP-5000e

PC Based Compact Printer



Searching for a New Balance

Flexible Operator Display

Colourful 8.4" TFT touch screen can be adjusted easily to offer eye-catching details at optimal viewing comfort.



More Features...

Remote diagnostics, email alert, printing graphics on label and receipt, and Help Mode for operators.

Sleek Keypad

Responsive physical keypad makes typing easier and more accurate.

Fast and Efficient Printing

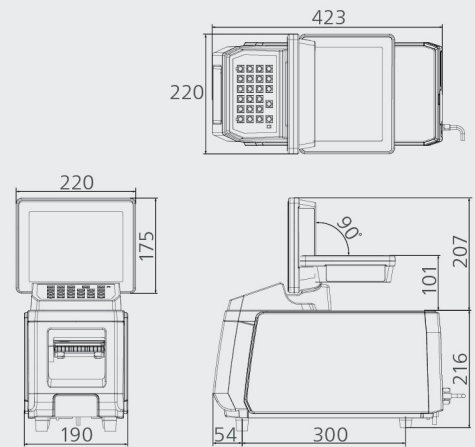
The front-loading 300dpi printer uses 80mm wide width label to deliver high-resolution printing while easing label change.

Small Footprint

Compact, space-saving design enables flexibility without compromising floor space.



External Dimensions (mm)

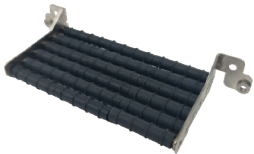


Options

Internal Rewinder Kit - Accommodates batch printing by winding up dispensed labels into a neat roll.



Long Label Holder - Prevents long label from falling off when dispensed.



Connect seamlessly to electronic shelf labels for in-store pricing automation.

eLabel..



InfoTag..



Linerless Labeling reduces paper waste to bring operational sustainability.



Specifications

| Model | DP-5000e | |
|--------------------------|--|----------------------------|
| Dimension WxDxH(mm) | 220 x 423 x 423 | |
| Operator Display | 8.4" TFT SVGA with Touch Panel | |
| Display Size WxD(Pixels) | 800 x 600 | |
| Display Rotatable Degree | + / - 30 degree left and right ; 90 degree up and down | |
| Types | Liner | Linerless With Auto-Cutter |
| Roll Diameter | Max 125mm | Max 125mm |
| Label / Roll Width | Max 80mm | Max 80mm |
| Receipt Print Width | Max 80mm | Max 80mm |
| Printing Speed | Max 150mm / second* | Max 150mm / second* |
| Print Resolution | 300 dpi | 300 dpi |
| Barcode Type | Interleaved 2 of 5, EAN-8, EAN-13, EAN-128, RSS, PDF417 (For Receipt Only), GS1, QR Code, Datamatrix | |
| Power Source | AC 100V / 220V | |
| Power Consumption | 80W | |
| Operating Temperature | -10°C to +40°C | |
| Humidity | 15% to 85% RH Non-Condensation | |
| Standard Interface | 2 x RS232C, Ethernet 10 / 100 Base T, 4 x USB 2.0, SD Socket | |
| Net Weight | 10.8 kg | |

| | |
|----------------|---|
| Options | Wireless LAN IEEE 802.11 a / b / g / n / ac, InfoTag, e.Label with Hi-Touch, Base Station |
| Factory Option | Linerless Printer with Auto-Cutter |

* To achieve maximum print speed, high sensitivity thermal paper is necessary.

Model Variations

- DI- 5000e Indicator
- DPS- 5000e Pre-pack scale



• Specifications are subject to change without prior notice
• Meet or exceed OIML Class III requirements

DIGI SINGAPORE Pte. Ltd.

4 Leng Kee Road #05-02/03/04/05/11/12
SIS Building SINGAPORE 159088
TEL : +65 6472 2996
SALES: +65 6378 5387
FAX : +65 6863 4614
URL : www.digisystem.com/sg/
E-MAIL : customer_support@sg.digi-group.com

TERAOKA SEIKO CO., LTD.

13-12 Kugahara 5-chome, Ohta-ku,
Tokyo 146-8580, JAPAN
TEL : +81-3-3752-2131
FAX : +81-3-3752-5562
URL : www.digisystem.com